

Mesh

3 Seater sofa

by Patricia Urquiola

kettal

3 Seater sofa

Designer
Patricia Urquiola

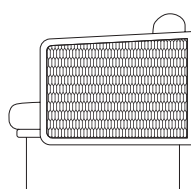
Collection
Mesh

Reference
KS1700100

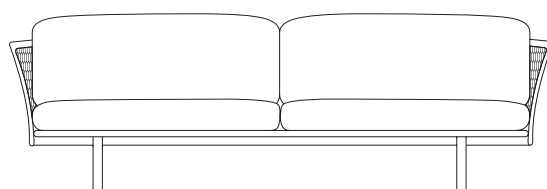
1/3

Kettal Mesh collection recalls architectural facades, which filter the surrounding environment without stopping the light and air flow. Industrial and natural materials, hard and soft surfaces, transparent and solid volumes are putted face to face in order to create this family of outdoor furniture based in contrasts.

cm/inch



cm/inch | 88/34,6 |



| 267/105,1 |



kettal

3 Seater sofa

Designer
Patricia Urquiola

Collection
Mesh

Reference
KS1700100

2/3

Materials

Aluminium
Antioxy, Heavy Load, Resistant
En-1421, Kettalize-It, Anti-
Scratch, Easy Clean, Flame
Retardant M1, Eco Friendly
Ecoembes Recycling Process

Teak
Eco-friendly, A-grade, Heavy
Load

Fabric
Heavy Load, 100.000 Cycles,
Heavy Load Resistant 1000
Decitex, Kettalize-It, Resist
U.V. En-581-4, Easy Clean,
Abrasion, Resistance 30.000
Cycles, Quickdry

Maintenance

Clean with mild soap using
sponge or cloth. Be gentle
while cleaning, do not scrub
aggressively the fabric. Once
cleaned please make sure you
remove soap excess.

In case of aggressive stains
clean with diluted household
bleach.

Clean stains promptly. The
longer it remains, more difficult
will be to remove.

Once cleaned the fabric steam
iron the fabric. Just use steam,
be carefull NOT placing the
iron directly in the fabric it will
get damage.

Frame Colour Options



Chalk
721



Bone
678



Tuff
103



Mist
773



Flint
734



London Clay
729



Mahogany
100



Carbon
737



Lilac
104



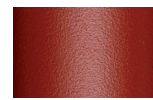
Feldspar
082



Sepia
088



Terra Rossa
087



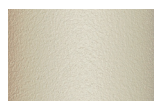
Magma
086



Terracota
085



Sahara
139



Camomile
106



Aquamarine
107



Cobalt
089



Indigo
094



Jade
091



Onyx
101



Juniper
092



Amazon
102



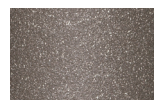
Bronze
093



Corten
727



Claystone
741



Sand Storm
132



Pumice
131



Galena
105



Manganese
726

Frame Colour Options



Teak
904

Other

3 Seater sofa

Designer
Patricia Urquiola

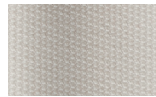
Collection
Mesh

Reference
KS1700100

3/3

Seat/Back Cushion

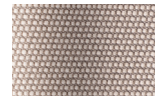
Terrain Laminate Fabrics



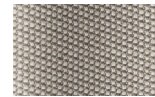
White Cliffs
290



Dry Sand
285



Porous Grey
291



Limestone
292



Fog
289



Deer
286



Wet Sand
287



Cobblestone
302



Cyprus Umber
301



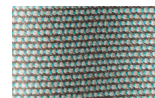
Loam
297



Charcoal
293



Arctic
295



Fjord
248



Cerulean
314



Caribbean
298



Atlantic
311



Rainforest
312



Lagoon
249



Cedar
288



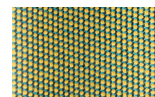
Moss
296



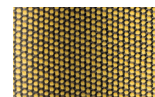
Olive
313



Autumn
315



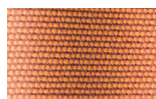
Summer Sky
317



Golden Sand
303



Flamma
304



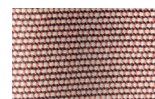
Sunrise
299



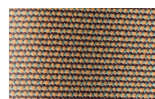
Saffron
305



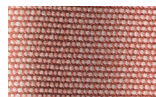
Burnt Sienna
306



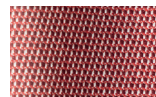
Ash Rose
294



Cooper
316



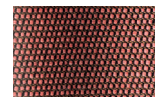
Dusk Pink
307



Flamingo
310



Coral
309



Sandstone
308

Mesh

Left corner module

“End”

(1 Side connection)

by Patricia Urquiola

kettal

Left corner module “End” (1 Side connection)

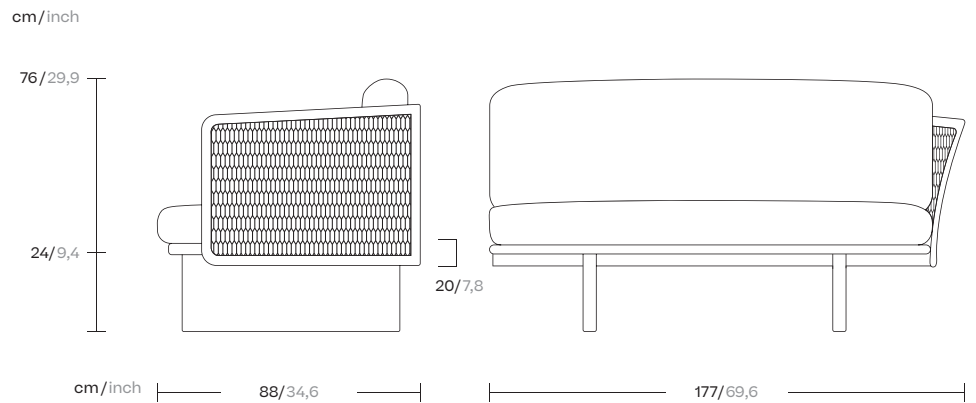
Designer
Patricia Urquiola

Collection
Mesh

Reference
KS1700200

1/3

Kettal Mesh collection recalls architectural facades, which filter the surrounding environment without stopping the light and air flow. Industrial and natural materials, hard and soft surfaces, transparent and solid volumes are putted face to face in order to create this family of outdoor furniture based in contrasts.



kettal

Left corner module “End” (1 Side connection)

Designer
Patricia Urquiola

Collection
Mesh

Reference
KS1700200

2/3

Materials

Aluminium
Antioxy, Heavy Load, Resistant En-1421, Kettalize-It, Anti-Scratch, Easy Clean, Flame Retardant M1, Eco Friendly Ecoembes Recycling Process

Teak
Eco-friendly, A-grade, Heavy Load

Fabric
Heavy Load, 100.000 Cycles, Heavy Load Resistant 1000 Decitex, Kettalize-It, Resist U.V. En-581-4, Easy Clean, Abrasion, Resistance 30.000 Cycles, Quickdry

Maintenance

Clean with mild soap using sponge or cloth. Be gentle while cleaning, do not scrub aggressively the fabric. Once cleaned please make sure you remove soap excess.

In case of aggressive stains clean with diluted household bleach.

Clean stains promptly. The longer it remains, more difficult will be to remove.

Once cleaned the fabric steam iron the fabric. Just use steam, be carefull NOT placing the iron directly in the fabric it will get damage.

Frame Colour Options

Terrain Paints



Chalk
721



Bone
678



Tuff
103



Mist
773



Flint
734



London Clay
729



Mahogany
100



Carbon
737



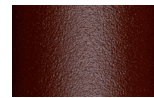
Lilac
104



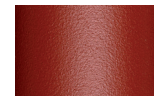
Feldspar
082



Sepia
088



Terra Rossa
087



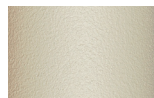
Magma
086



Terracota
085



Sahara
139



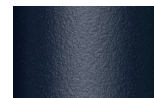
Camomile
106



Aquamarine
107



Cobalt
089



Indigo
094



Jade
091



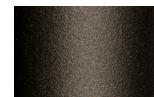
Onyx
101



Juniper
092



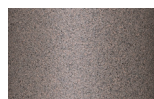
Amazon
102



Bronze
093



Corten
727



Claystone
741



Sand Storm
132



Pumice
131



Galena
105



Manganese
726

Frame Colour Options

Other



Teak
904

Left corner module “End” (1 Side connection)

Designer
Patricia Urquiola

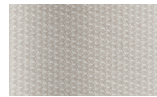
Collection
Mesh

Reference
KS1700200

3/3

Seat/Back Cushion

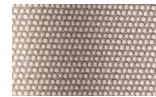
Terrain Laminate Fabrics



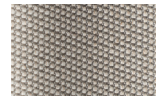
White Cliffs
290



Dry Sand
285



Porous Grey
291



Limestone
292



Fog
289



Deer
286



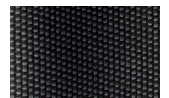
Wet Sand
287



Cobblestone
302



Cyprus Umber
301



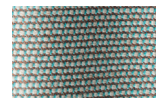
Loam
297



Charcoal
293



Arctic
295



Fjord
248



Cerulean
314



Caribbean
298



Atlantic
311



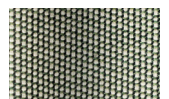
Rainforest
312



Lagoon
249



Cedar
288



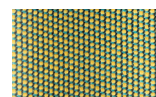
Moss
296



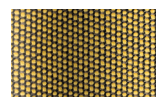
Olive
313



Autumn
315



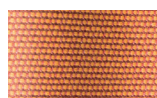
Summer Sky
317



Golden Sand
303



Flamma
304



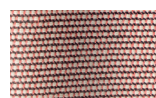
Sunrise
299



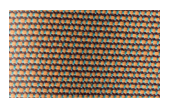
Saffron
305



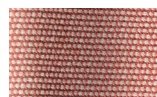
Burnt Sienna
306



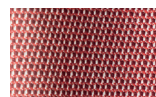
Ash Rose
294



Cooper
316



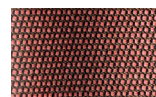
Dusk Pink
307



Flamingo
310



Coral
309



Sandstone
308

Mesh

Right corner module

“End”

(1 Side connection)

by Patricia Urquiola

kettal

Right corner module “End” (1 Side connection)

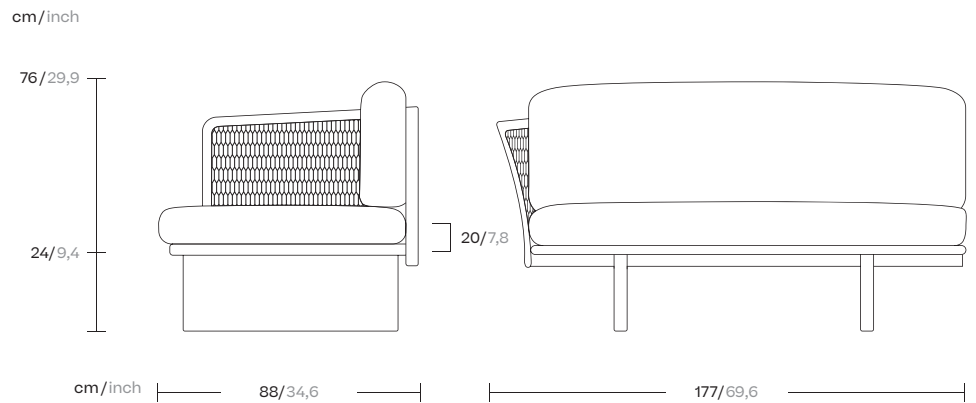
Designer
Patricia Urquiola

Collection
Mesh

Reference
KS1700300

1/3

Kettal Mesh collection recalls architectural facades, which filter the surrounding environment without stopping the light and air flow. Industrial and natural materials, hard and soft surfaces, transparent and solid volumes are putted face to face in order to create this family of outdoor furniture based in contrasts.



kettal

Right corner module “End” (1 Side connection)

Designer
Patricia Urquiola

Collection
Mesh

Reference
KS1700300

2/3

Materials

Aluminium
Antioxy, Heavy Load, Resistant En-1421, Kettalize-It, Anti-Scratch, Easy Clean, Flame Retardant M1, Eco Friendly Ecoembes Recycling Process

Teak
Eco-friendly, A-grade, Heavy Load

Fabric
Heavy Load, 100.000 Cycles, Heavy Load Resistant 1000 Decitex, Kettalize-It, Resist U.V. En-581-4, Easy Clean, Abrasion, Resistance 30.000 Cycles, Quickdry

Maintenance

Clean with mild soap using sponge or cloth. Be gentle while cleaning, do not scrub aggressively the fabric. Once cleaned please make sure you remove soap excess.

In case of aggressive stains clean with diluted household bleach.

Clean stains promptly. The longer it remains, more difficult will be to remove.

Once cleaned the fabric steam iron the fabric. Just use steam, be carefull NOT placing the iron directly in the fabric it will get damage.

Frame Colour Options

Terrain Paints



Chalk
721



Bone
678



Tuff
103



Mist
773



Flint
734



London Clay
729



Mahogany
100



Carbon
737



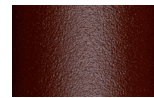
Lilac
104



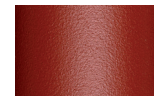
Feldspar
082



Sepia
088



Terra Rossa
087



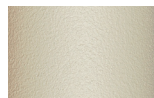
Magma
086



Terracota
085



Sahara
139



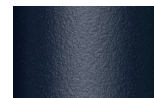
Camomile
106



Aquamarine
107



Cobalt
089



Indigo
094



Jade
091



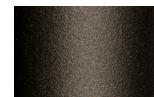
Onyx
101



Juniper
092



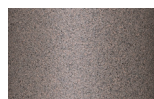
Amazon
102



Bronze
093



Corten
727



Claystone
741



Sand Storm
132



Pumice
131



Galena
105



Manganese
726

Frame Colour Options

Other



Teak
904

Right corner module “End” (1 Side connection)

Designer
Patricia Urquiola

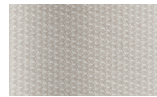
Collection
Mesh

Reference
KS1700300

3/3

Seat/Back Cushion

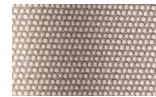
Terrain Laminate Fabrics



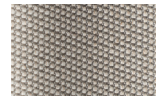
White Cliffs
290



Dry Sand
285



Porous Grey
291



Limestone
292



Fog
289



Deer
286



Wet Sand
287



Cobblestone
302



Cyprus Umber
301



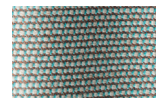
Loam
297



Charcoal
293



Arctic
295



Fjord
248



Cerulean
314



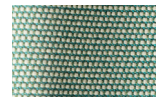
Caribbean
298



Atlantic
311



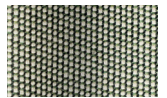
Rainforest
312



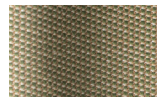
Lagoon
249



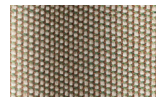
Cedar
288



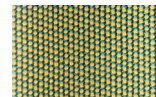
Moss
296



Olive
313



Autumn
315



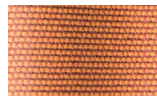
Summer Sky
317



Golden Sand
303



Flamma
304



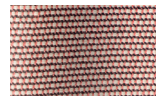
Sunrise
299



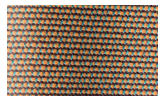
Saffron
305



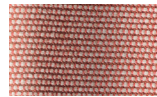
Burnt Sienna
306



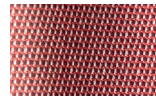
Ash Rose
294



Cooper
316



Dusk Pink
307



Flamingo
310



Coral
309



Sandstone
308

Mesh

Left corner module

“2 Sides connection”

by Patricia Urquiola

kettal

Left corner module “2 Sides connection”

Designer
Patricia Urquiola

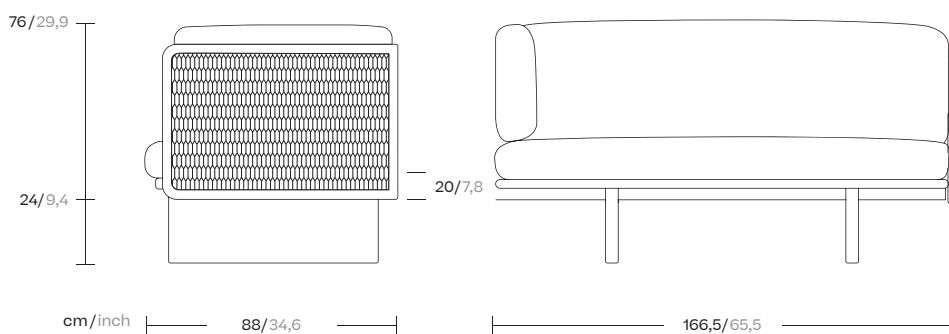
Collection
Mesh

Reference
KS1700400

1/3

Kettal Mesh collection recalls architectural facades, which filter the surrounding environment without stopping the light and air flow. Industrial and natural materials, hard and soft surfaces, transparent and solid volumes are putted face to face in order to create this family of outdoor furniture based in contrasts.

cm/inch



kettal

Left corner module “2 Sides connection”

Designer
Patricia Urquiola

Collection
Mesh

Reference
KS1700400

2/3

Materials

Aluminium
Antioxy, Heavy Load, Resistant En-1421, Kettalize-It, Anti-Scratch, Easy Clean, Flame Retardant M1, Eco Friendly Ecoembes Recycling Process

Teak
Eco-friendly, A-grade, Heavy Load

Fabric
Heavy Load, 100.000 Cycles, Heavy Load Resistant 1000 Decitex, Kettalize-It, Resist U.V. En-581-4, Easy Clean, Abrasion, Resistance 30.000 Cycles, Quickdry

Maintenance

Clean with mild soap using sponge or cloth. Be gentle while cleaning, do not scrub aggressively the fabric. Once cleaned please make sure you remove soap excess.

In case of aggressive stains clean with diluted household bleach.

Clean stains promptly. The longer it remains, more difficult will be to remove.

Once cleaned the fabric steam iron the fabric. Just use steam, be carefull NOT placing the iron directly in the fabric it will get damage.

Frame Colour Options



Chalk
721



Bone
678



Tuff
103



Mist
773



Flint
734



London Clay
729



Mahogany
100



Carbon
737



Lilac
104



Feldspar
082



Sepia
088



Terra Rossa
087



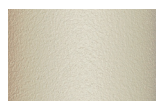
Magma
086



Terracota
085



Sahara
139



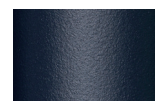
Camomile
106



Aquamarine
107



Cobalt
089



Indigo
094



Jade
091



Onyx
101



Juniper
092



Amazon
102



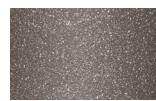
Bronze
093



Corten
727



Claystone
741



Sand Storm
132



Pumice
131



Galena
105



Manganese
726

Frame Colour Options



Teak
904

Other

Left corner module “2 Sides connection”

Designer
Patricia Urquiola

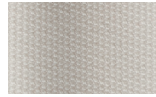
Collection
Mesh

Reference
KS1700400

3/3

Seat/Back/Side Cushion

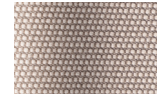
Terrain Laminate Fabrics



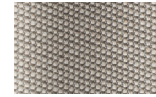
White Cliffs
290



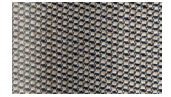
Dry Sand
285



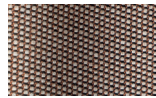
Porous Grey
291



Limestone
292



Fog
289



Deer
286



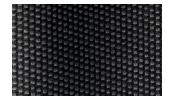
Wet Sand
287



Cobblestone
302



Cyprus Umber
301



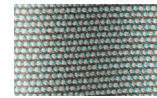
Loam
297



Charcoal
293



Arctic
295



Fjord
248



Cerulean
314



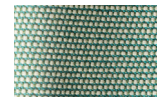
Caribbean
298



Atlantic
311



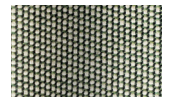
Rainforest
312



Lagoon
249



Cedar
288



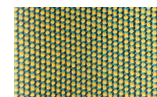
Moss
296



Olive
313



Autumn
315



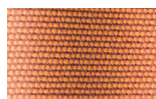
Summer Sky
317



Golden Sand
303



Flamma
304



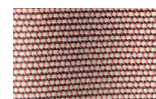
Sunrise
299



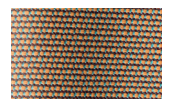
Saffron
305



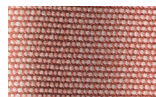
Burnt Sienna
306



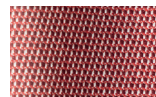
Ash Rose
294



Cooper
316



Dusk Pink
307



Flamingo
310



Coral
309



Sandstone
308

Mesh

Right corner module

“2 Sides connection”

by Patricia Urquiola

kettal

Right corner module “2 Sides connection”

Designer
Patricia Urquiola

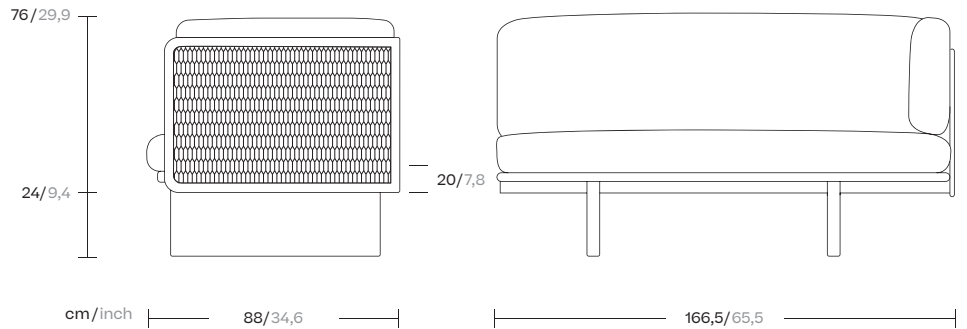
Collection
Mesh

Reference
KS1700500

1/3

Kettal Mesh collection recalls architectural facades, which filter the surrounding environment without stopping the light and air flow. Industrial and natural materials, hard and soft surfaces, transparent and solid volumes are putted face to face in order to create this family of outdoor furniture based in contrasts.

cm/inch



kettal

Right corner module “2 Sides connection”

Designer
Patricia Urquiola

Collection
Mesh

Reference
KS1700500

2/3

Materials

Aluminium
Antioxy, Heavy Load, Resistant
En-1421, Kettalize-It, Anti-
Scratch, Easy Clean, Flame
Retardant M1, Eco Friendly
Ecoembes Recycling Process

Teak
Eco-friendly, A-grade, Heavy
Load

Fabric
Heavy Load, 100.000 Cycles,
Heavy Load Resistant 1000
Decitex, Kettalize-It, Resist
U.V. En-581-4, Easy Clean,
Abrasion, Resistance 30.000
Cycles, Quickdry

Maintenance

Clean with mild soap using
sponge or cloth. Be gentle
while cleaning, do not scrub
aggressively the fabric. Once
cleaned please make sure you
remove soap excess.

In case of aggressive stains
clean with diluted household
bleach.

Clean stains promptly. The
longer it remains, more difficult
will be to remove.

Once cleaned the fabric steam
iron the fabric. Just use steam,
be carefull NOT placing the
iron directly in the fabric it will
get damage.

Frame Colour Options



Chalk
721



Bone
678



Tuff
103



Mist
773



Flint
734



London Clay
729



Mahogany
100



Carbon
737



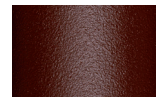
Lilac
104



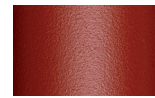
Feldspar
082



Sepia
088



Terra Rossa
087



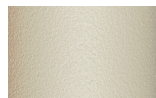
Magma
086



Terracota
085



Sahara
139



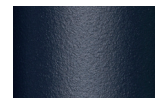
Camomile
106



Aquamarine
107



Cobalt
089



Indigo
094



Jade
091



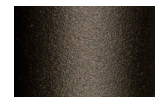
Onyx
101



Juniper
092



Amazon
102



Bronze
093



Corten
727



Claystone
741



Sand Storm
132



Pumice
131



Galena
105



Manganese
726

Frame Colour Options



Teak
904

Other

Right corner module “2 Sides connection”

Designer
Patricia Urquiola

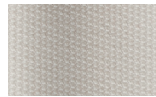
Collection
Mesh

Reference
KS1700500

3/3

Seat/Back/Side Cushion

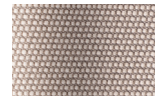
Terrain Laminate Fabrics



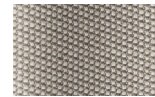
White Cliffs
290



Dry Sand
285



Porous Grey
291



Limestone
292



Fog
289



Deer
286



Wet Sand
287



Cobblestone
302



Cyprus Umber
301



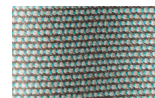
Loam
297



Charcoal
293



Arctic
295



Fjord
248



Cerulean
314



Caribbean
298



Atlantic
311



Rainforest
312



Lagoon
249



Cedar
288



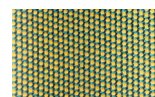
Moss
296



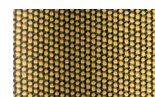
Olive
313



Autumn
315



Summer Sky
317



Golden Sand
303



Flamma
304



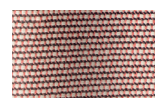
Sunrise
299



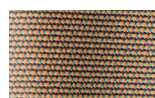
Saffron
305



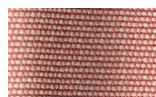
Burnt Sienna
306



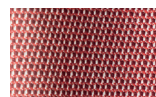
Ash Rose
294



Cooper
316



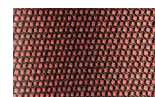
Dusk Pink
307



Flamingo
310



Coral
309



Sandstone
308

Mesh

Central module

“2 Sides connection”

by Patricia Urquiola

kettal

Central module “2 Sides connection”

Designer
Patricia Urquiola

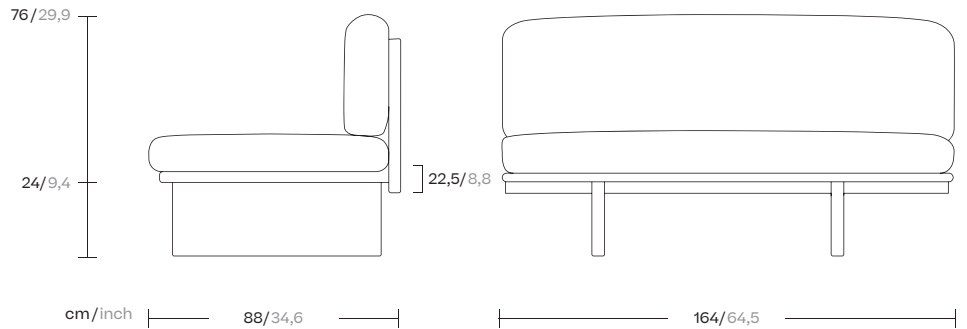
Collection
Mesh

Reference
KS1700600

1/3

Kettal Mesh collection recalls architectural facades, which filter the surrounding environment without stopping the light and air flow. Industrial and natural materials, hard and soft surfaces, transparent and solid volumes are putted face to face in order to create this family of outdoor furniture based in contrasts.

cm/inch



kettal

Central module “2 Sides connection”

Designer
Patricia Urquiola

Collection
Mesh

Reference
KS1700600

2/3

Materials

Aluminium
Antioxy, Heavy Load, Resistant En-1421, Kettalize-It, Anti-Scratch, Easy Clean, Flame Retardant M1, Eco Friendly Ecoembes Recycling Process

Teak
Eco-friendly, A-grade, Heavy Load

Fabric
Heavy Load, 100.000 Cycles, Heavy Load Resistant 1000 Decitex, Kettalize-It, Resist U.V. En-581-4, Easy Clean, Abrasion, Resistance 30.000 Cycles, Quickdry

Maintenance

Clean with mild soap using sponge or cloth. Be gentle while cleaning, do not scrub aggressively the fabric. Once cleaned please make sure you remove soap excess.

In case of aggressive stains clean with diluted household bleach.

Clean stains promptly. The longer it remains, more difficult will be to remove.

Once cleaned the fabric steam iron the fabric. Just use steam, be carefull NOT placing the iron directly in the fabric it will get damage.

Frame Colour Options



Chalk
721



Bone
678



Tuff
103



Mist
773



Flint
734



London Clay
729



Mahogany
100



Carbon
737



Lilac
104



Feldspar
082



Sepia
088



Terra Rossa
087



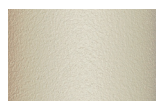
Magma
086



Terracota
085



Sahara
139



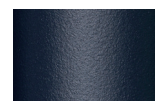
Camomile
106



Aquamarine
107



Cobalt
089



Indigo
094



Jade
091



Onyx
101



Juniper
092



Amazon
102



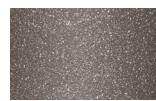
Bronze
093



Corten
727



Claystone
741



Sand Storm
132



Pumice
131



Galena
105



Manganese
726

Frame Colour Options



Teak
904

Other

Central module “2 Sides connection”

Designer
Patricia Urquiola

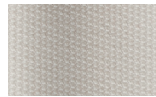
Collection
Mesh

Reference
KS1700600

3/3

Seat/Back Cushion

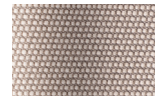
Terrain Laminate Fabrics



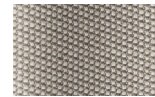
White Cliffs
290



Dry Sand
285



Porous Grey
291



Limestone
292



Fog
289



Deer
286



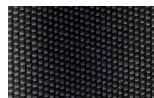
Wet Sand
287



Cobblestone
302



Cyprus Umber
301



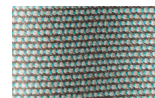
Loam
297



Charcoal
293



Arctic
295



Fjord
248



Cerulean
314



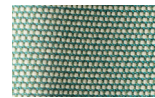
Caribbean
298



Atlantic
311



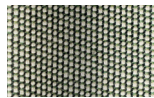
Rainforest
312



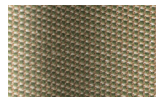
Lagoon
249



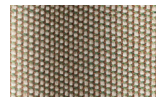
Cedar
288



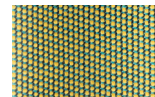
Moss
296



Olive
313



Autumn
315



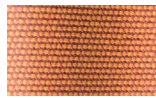
Summer Sky
317



Golden Sand
303



Flamma
304



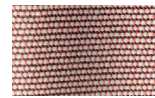
Sunrise
299



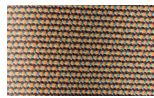
Saffron
305



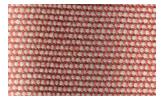
Burnt Sienna
306



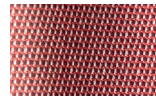
Ash Rose
294



Cooper
316



Dusk Pink
307



Flamingo
310



Coral
309



Sandstone
308